

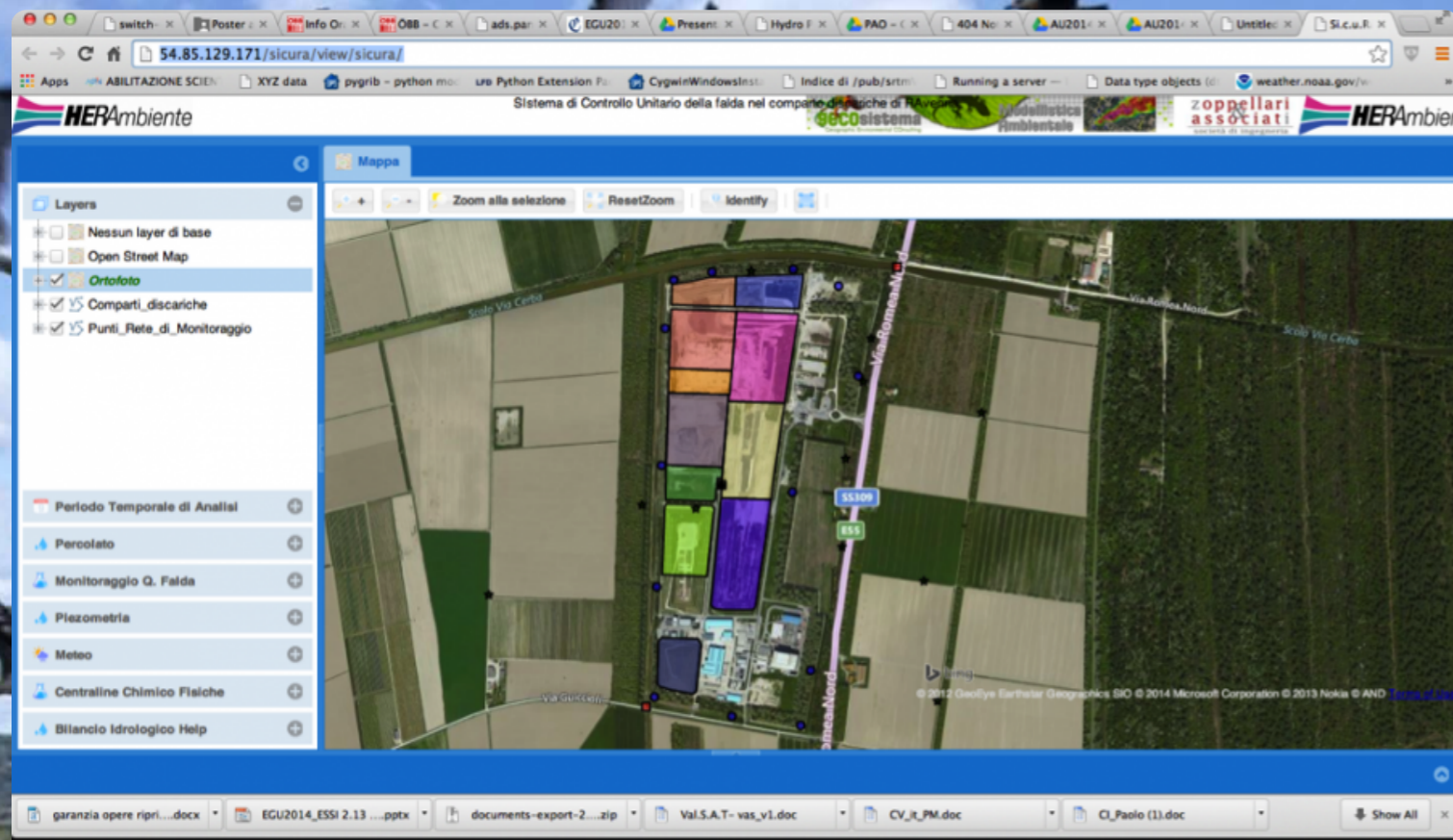
A Web-GIS Decision Support System for groundwater quality monitoring and risk assessment for a Waste landfill

<http://gecosistema.com/landrisk>

LAND-RISK is a web-based Spatial Decision Support System able to manage, analyse, modelling and evaluate in real time (daily) the groundwater quality and risk for human and environment related to a Waste Landfill site.

LAND-RISK is developed as a web services merging together the following elements:

- real-time acquisition of data from monitoring sensors for water quality and aquifer hydraulic head
- numerical hydrogeological model for flow and transport (FEFLOW)
- hydrological water balance of the study area and for the landfill (HELP)
- human health and groundwater risk/exposure assessment models
- routines for spatial interpolation (Ordinary Kriging)





LAND-RISK

A Web-GIS Decision Support System for groundwater quality monitoring and risk assessment for a Waste landfill

<http://gecosistema.com/landrisk>

LAND-RISK allows the landfill site manager and the control Authorities to obtain real-time information about the status of the water quality at the monitoring points LAND-RISK is developed in a Web-GIS using open-source software (Open Layer) and is accessible through a common web-browser without the need to install special software, the service is available on Cloud technology can provide computing power and adequate speed for the return to the user in real time.

We tailor the LANDRISK service based on user needs and available data.

Your landfill site has to deal with groundwater pollution and contamination?

Take a look at our tool:

<http://gecosistema.com/landrisk>

contacts: home@gecosistema.it

