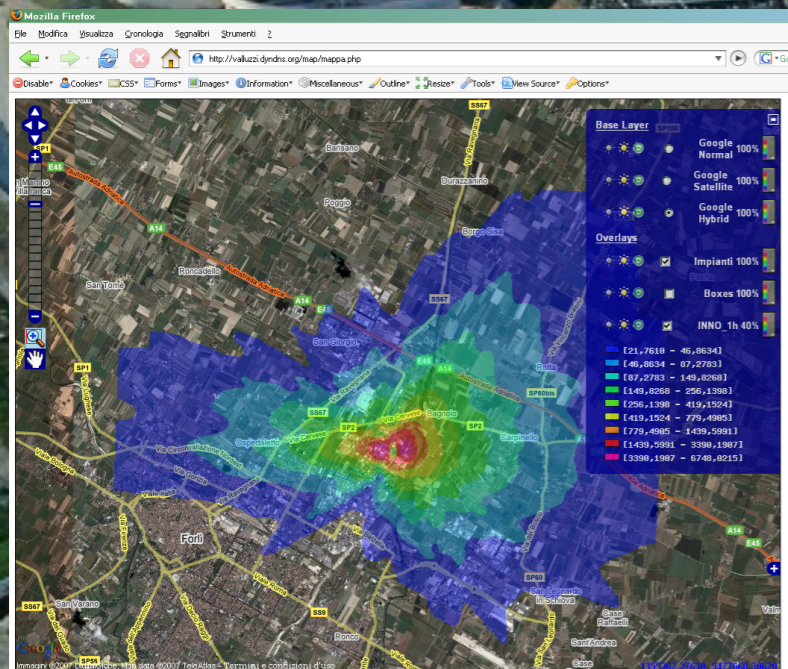
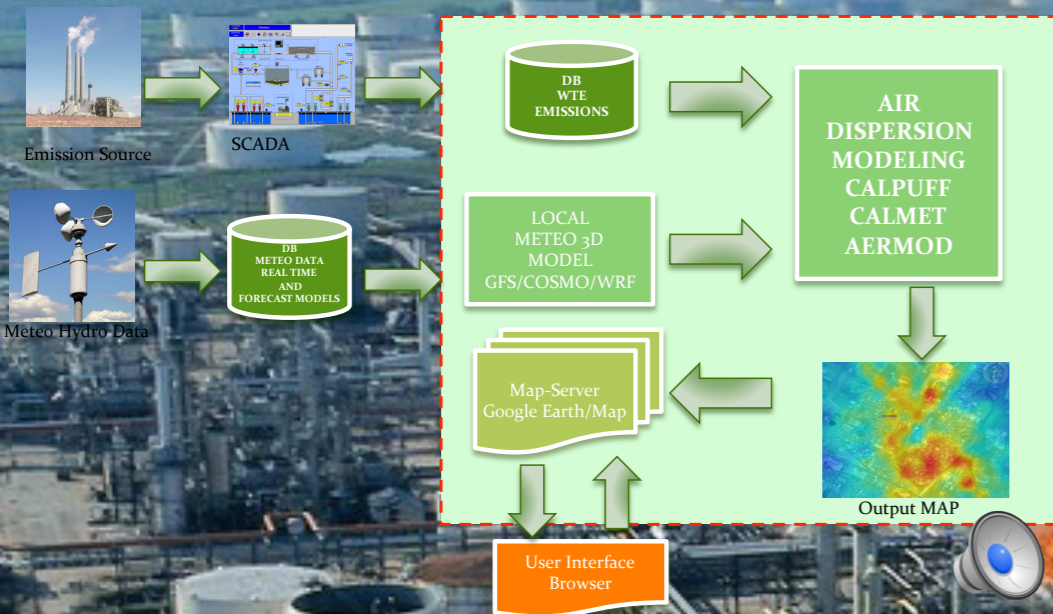




AWESOME: real time Air and Water EmissionS and Odor Mapping systEm

A New Cloud-based application for real-time modelling and mapping the air and water pollution dispersion from industrial sources

<http://gecosistema.com/awesome>



AWESOME it's a "Plug&Play" cloud based web app able to provide a low-cost and user friendly DSS platform for real-time modelling, mapping, management and monitoring the air, odor and water emissions released by an IPCC industrial site.



AWESOME: real time Air and Water EmissionS and Odor Mapping systEm

A New Cloud-based application for real-time modelling and mapping the air and water pollution dispersion from industrial sources

<http://gecosistema.com/awesome>

AWESOME is developed as a Cloud-based application and can be easily plugged into the available monitoring system (air, water and odor) of the industrial IPCC site.

We tailor the AWESOME service based on user needs and available data.

Your industrial site has to deal with air and water dispersion problems ?

Take a look at our tool:

<http://gecosistema.com/awesome>

contacts: home@gecosistema.it

The embedded environmental dispersion models are:

- Meteorological Data/Models
 - on site meteo stations
 - CFS, GFS and ECMWF meteo data
 - CALMET, AERMET
- Air Dispersion Model:
 - CALPUFF and AERMOD
- Surface Water :
 - GIS based analytical models
 - CORMIX, VISUAL PLUME

